

# CAMS

IL FUTURO È VERDE





# TABLE OF CONTENTS

## TECHNOLOGIES

SHREDDING	4
PRE-SHREDDING SYSTEM	6
CONTROL SYSTEM	8
HYBRID DRIVE TECHNOLOGY	10

<b>CAMS CARE</b>	<b>12</b>
ONE CLICK, ALL YOU NEED	12

<b>CENTAURO RANGE</b>	<b>14</b>
CENTAURO 100.32	16
CENTAURO L 120.56	16
CENTAURO L 120.56 APR	17
CENTAURO XL 150.56	17
CENTAURO XL 150.56 APR	18
CENTAURO XL 150.69 APR	18
ASA SYSTEM	19

<b>UTM RANGE</b>	<b>20</b>
UTM 750	22
UTM 1000	22
UTM 1200	23
UTM 1500	23

<b>UTS RANGE</b>	<b>24</b>
UTS 750	26
UTS 1000	26
UTS 1200	27
UTS 1500	27

<b>UCS RANGE</b>	<b>28</b>
UCS 1200	29
CTR 1200	29

<b>UVS RANGE</b>	<b>30</b>
UVS 25/2	32
UVS 36/2	32
UVS 42	33
UVS 56	33

<b>FTR RANGE</b>	<b>34</b>
FTR RANGE	35

<b>DUST SUPPRESION CANNON</b>	<b>36</b>
-------------------------------	-----------

<b>AERAULIC SEPARATOR</b>	<b>37</b>
---------------------------	-----------

# SHREDDING





## **INNOVATIVE TECHNOLOGY**

CAMS shredders are designed to operate by exploiting the shear stress, reducing energy consumption and environmental impact. The FTR and CTR ranges reduce the volume of different types of material, making them homogeneously sized, perfect for transport or further processing.

## **PRODUCTION QUALITY**

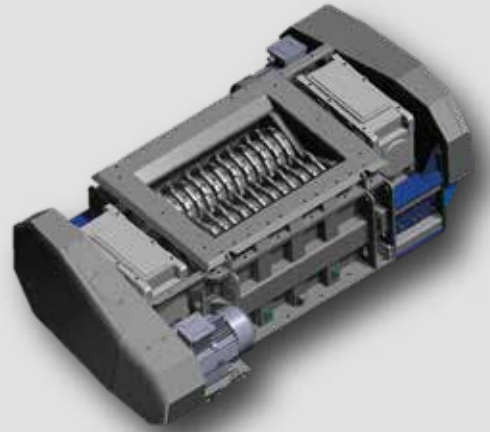
The low rotational speed of the shafts ensures high efficiency, reducing noise pollution, dust emissions and minimising wear.

The use of special steel alloys for the teeth of CAMS shredders lowers operating costs, ensuring maximum uptime.

In addition, a patented system ensures that wear parts can be replaced without the need to disassemble the machine.

## **MAXIMUM VERSATILITY**

The entire range of shredders is designed to return a very high quality product from a wide variety of materials: from concrete to asphalt, for which the original grain size curve is not altered, guaranteeing 100% recycling of the original bitumen content.



**PRIMARY SHREDDERS - FTR RANGE**



**SECONDARY SHREDDERS - CTR RANGE**

# PRE-SHREDDING SYSTEM

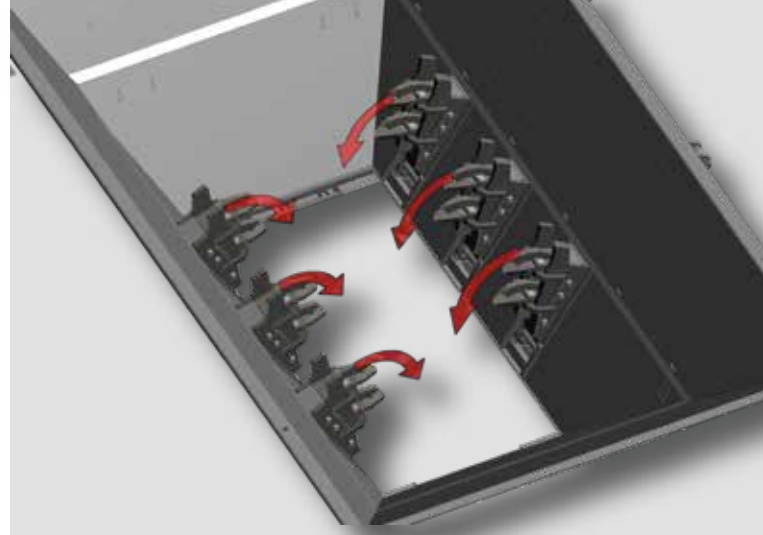


The patented CAMS hydraulic pusher system allows even the largest blocks to be loaded directly into the shredding unit.

The pushers keep coarser slabs and rubble firmly on the shafts of the shredder, making the action of the teeth easier.

The movement of the pushers can be adjusted according to the type of material to be processed, ensuring maximum efficiency.

The system is fully automated and can be controlled remotely.



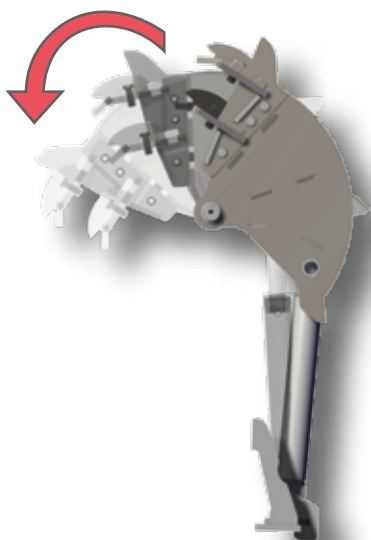
**PATENT**

---

# HYDRAULIC PUSHERS

The patented hydraulic pusher system guarantees the shredding of the coarsest materials, even in full-electric mode.

This fully automated technology pre-shreds the bulkiest blocks inside the feeding hopper, facilitating the action of the primary shredder.



---

PATENTED

---





# CONTROL SYSTEM

## PLC SOFTWARE

The PLC software developed by CAMS engineers allows remote control of the machine, automating the production process and making it simple and intuitive for the user.

The programme allows the recycling process to start automatically, while the activity of the entire plant is constantly monitored by the software.

## TELEMETRY FEATURES

- Complete control over the mobile plant;
- Customisable functions;
- Component diagnostics and testing;
- Performance monitoring;
- Remote assistance and GPS;
- Electronic weighing system;
- Simple and intuitive human-machine interface.





## INTEGRATED SOFTWARE

CAMS control software allows for continuously monitoring the operating conditions of the machine and its components, while choosing from a variety of settings, and setting key parameters that allow for a high degree of flexibility and customisation of operating modes.

Integrated interconnection systems allow for direct communication with the end customer's office and the transmission of important information such as shredder operating data, location and active alarms.



## REMOTE CONTROL

With its 150 meters range, the wireless remote control allows the operator to move the machine in complete safety and to perform a wide variety of actions. The LCD monitor shows the machine's performance in real time.



# HYBRID DRIVE TECHNOLOGY

## “GREEN” MACHINES

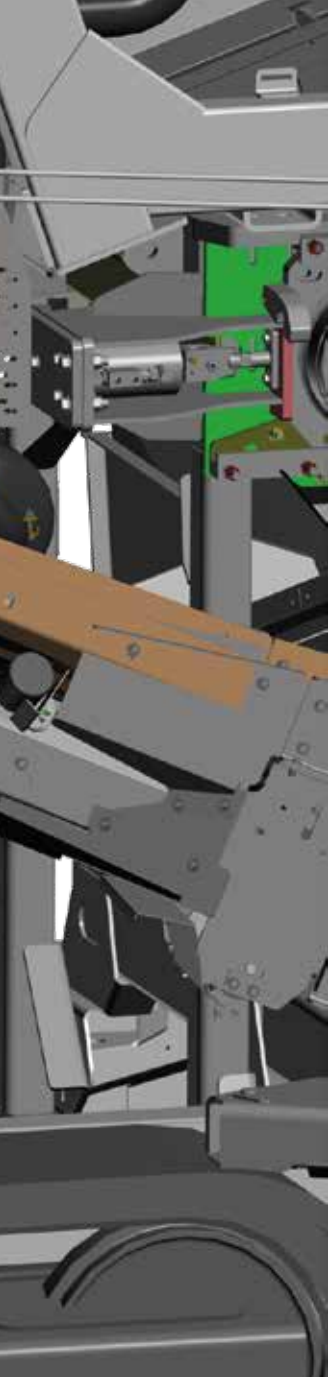
Two key words identify the CAMS shredder range: **Power** and **Sustainability**.

All CAMS mobile plants are equipped with a genset for powerful and efficient diesel-electric drive. The engine is coupled to an alternator to produce the electrical energy needed to run the whole machine, and to provide electrical power to other equipment.

In order to maximise the torque that can be delivered by the diesel engine and to ensure minimum fuel consumption, the genset operates in steady state at a speed of 1500 rpm.

All CAMS mobile machines can operate in “full electric”, bypassing the genset for zero CO<sub>2</sub> emissions.





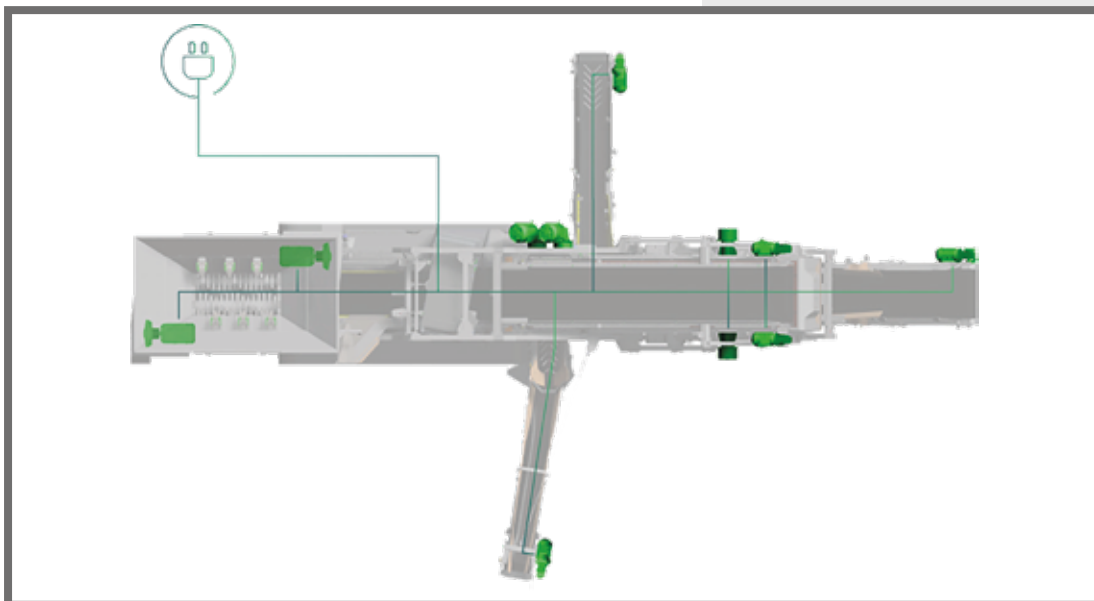
## SUSTAINABILITY

CAMS technologies are designed to reduce environmental impact. Low dust emissions, reduced noise pollution, vibration isolation, and the possibility of switching the machine's power supply to the site's electrical net.

## POWER SUPPLY

The FTR and CTR series models are characterised by an all-electric power supply.

The recycling process reduces the use of raw materials and eliminates CO<sub>2</sub> emissions.



# AFTER SALES

## AUGMENTED REALITY SUPPORT



### AUGMENTED REALITY ASSISTANCE

The ARS (Augmented Reality Support) system uses augmented reality technology to put you in direct contact with a CAMS specialist for immediate assistance.

Using the app on smartphones and tablets, diagnostics and troubleshooting can be performed in real time, reducing downtime and costs.



### GPS

CAMS machines are equipped with a GPS tracking system that can be monitored from any device.

### QUALITY MONITORING

- Production data;
- Online database;
- Hours of operation;
- Remote functions;
- Alarms and diagnostics.



# CA

## STAY CO



Brochure



Video



# PARTS STORE



**MS** CARE

## CAMS PARTS E-SHOP

CAMS new parts e-shop revolutionises the distribution of spare parts; whatever the need, you will have all supplies available directly on your PC.



**CONNECTED**



Reserved Area



News





SERIE

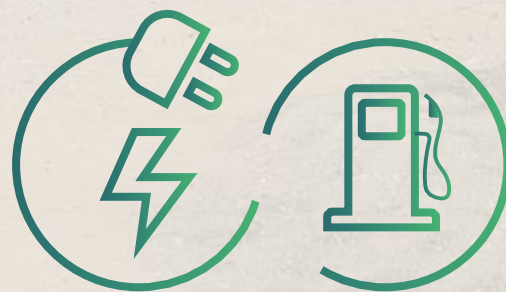
# CENTAURO

## FEATURES

- Automatic material handling programmes;
- Ability to handle wet materials;
- Single genset to power all components;
- Low fuel consumption;
- Designed for transport in compact size;
- High wear resistance;
- Ability to supply electricity to other equipment;
- Limited noise and dust emissions;
- Ability to recover 100% of the original bitumen content.

## OPTIONAL

- Hydraulic hopper extensions;
- Hydraulic pushers;
- GPS;
- Electronic weighing system;
- Diesel filling pump;
- Automatic greasing system.



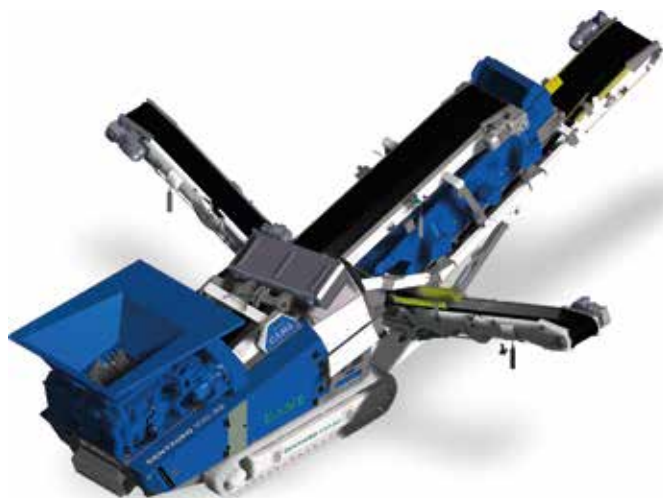
### Hybrid Power Supply

The **CENTAURO** series can operate in fully electric mode, for **Zero CO<sub>2</sub>** emissions (without Diesel engine)





# CENTAURO 100.32



## Hopper

Capacity: 3 m<sup>3</sup>  
Length: 3.00 m  
Width: 2.00 m

## Screen

Type: CVV032  
Deck surface: mm 3200 x 1000  
Decks number: 2

## Primary shredder

Range: FTR 1000  
Feed opening : mm 1000 x 900

## Hybrid Power Unit

Engine: CAT C4.4 Stage V 125 kW  
Alternator: MeccAlte 165 kVA  
Tank capacity: 170 l

## Output potential

120 t/h

## Transport dimensions

Length: 11 m  
Height: 3.10 m  
Width: 2.50 m  
Weight: 24'500 kg

# CENTAURO L 120.56



## Hopper

Capacity: 3.5 m<sup>3</sup>  
Length: 2.50 m  
Width: 2.30 m

## Screen

Type: CVV056  
Deck surface: mm 4300 x 1300  
Decks number: 2

## Primary shredder

Range: FTR 1200  
Feed opening : mm 1200 x 900

## Hybrid Power Unit

Engine: CAT C7.1 Stage V 225 kW  
Alternator: MeccAlte 350 kVA  
Tank capacity: 230 l

## Output potential

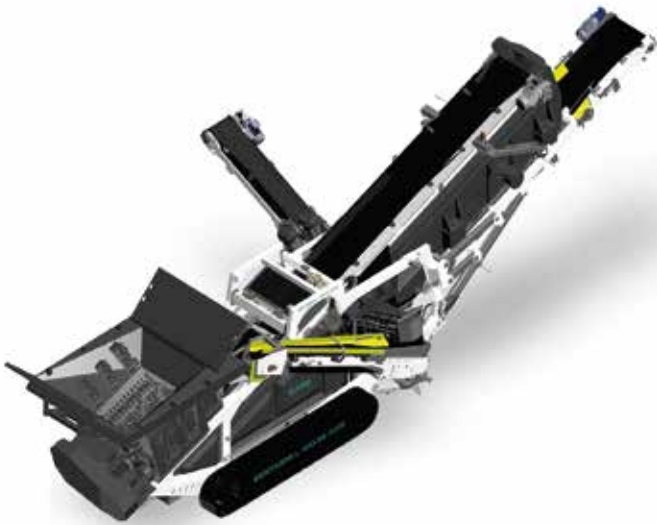
180 t/h

## Transport dimensions

Length: 13 m  
Height: 3.10 m  
Width: 2.50 m  
Weight: 33'000 kg



# CENTAURO L 120.56 APR



## Hopper

Capacity: 3.50 m<sup>3</sup>  
Length: 2.50 m  
Width: 2.30 m

## Screen

Type: CVV056  
Deck surface: mm 4300 x 1300  
Decks number: 2

## Primary shredder

Range: FTR 1200  
Feed opening: mm 1200 x 900

## Hybrid Power Unit

Engine: CAT C9.3 Stage V 285 kW  
Alternator: MeccAlte 400 kVA  
Tank capacity: 230 l

## Secondary shredder

Range: CTR 1200  
Feed opening : mm 1200 x 900

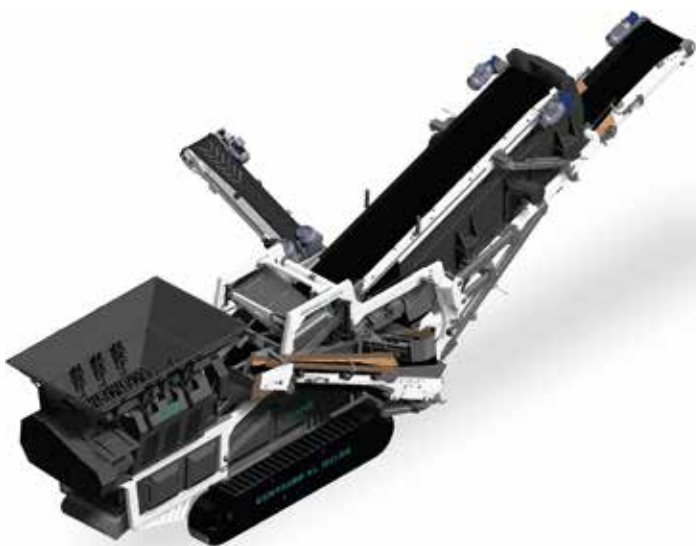
## Transport dimensions

Length: 13 m  
Height: 3.10 m  
Width: 2.50 m  
Weight: 36'100 kg

## Output potential

180 t/h

# CENTAURO XL 150.56



## Hopper

Capacity: 3.80 m<sup>3</sup>  
Length: 3.50 m  
Width: 2.00 m

## Screen

Type: CVV056  
Deck surface: mm 4300 x 1300  
Decks number: 2

## Primary shredder

Range: FTR 1500  
Feed opening: mm 1500 x 900

## Hybrid Power Unit

Engine: CAT C9.3 Stage V 285 kW  
Alternator: MeccAlte 400 kVA  
Tank capacity: 230 l

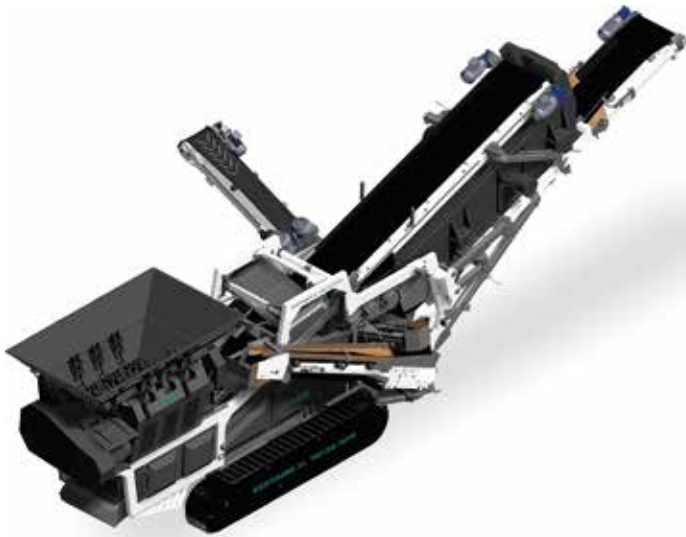
## Output potential

200 t/h

## Transport dimensions

Length: 13.65 m  
Height: 3.40 m  
Width: 2.55 m  
Weight: 38'000 kg

# CENTAURO XL 150.56 APR



## Hopper

Capacity: 3.80 m<sup>3</sup>  
Length: 3.50 m  
Width: 2.00 m

## Screen

Type: CVV056  
Deck surface: mm 4300 x 1300  
Decks number: 2

## Primary shredder

Range: FTR 1500  
Feed opening: mm 1500 x 900

## Hybrid Power Unit

Engine: CAT C9.3 Stage V 285 kW  
Alternator: MeccAlte 400 kVA  
Tank capacity: 230 l

## Secondary shredder

Range: CTR 1200  
Feed opening: mm 1200 x 900

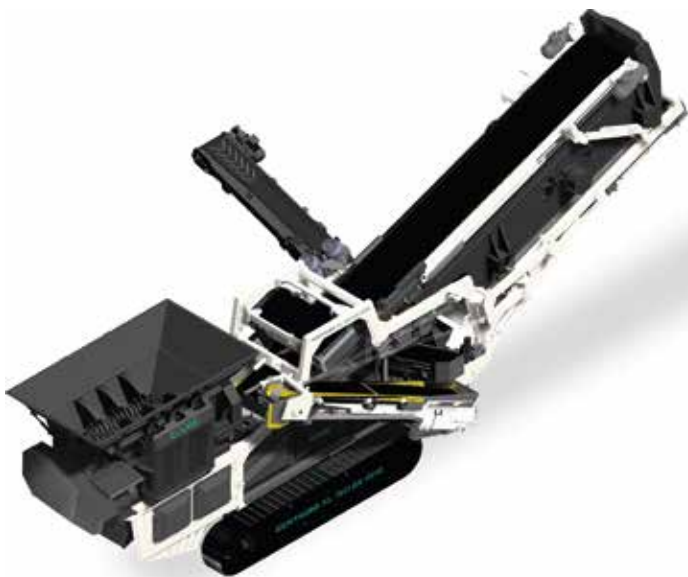
## Transport dimensions

Length: 13.65 m  
Height: 3.40 m  
Width: 2.55 m  
Weight: 42'000 kg

## Output potential

200 t/h

# CENTAURO XL 150.69 APR



## Hopper

Capacity: 3.80 m<sup>3</sup>  
Length: 3.50 m  
Width: 2.00 m

## Screen

Type: CVV069  
Deck surface: mm 5300 x 1300  
Decks number: 2

## Primary shredder

Range: FTR 1500  
Feed opening: mm 1500 x 900

## Hybrid Power Unit

Engine: CAT C9.3 Stage V 285 kW  
Alternator: MeccAlte 400 kVA  
Tank capacity: 230 l

## Secondary shredder

Range: CTR 1200  
Feed opening: mm 1200 x 900

## Transport dimensions

Length: 14 m  
Height: 3.40 m  
Width: 2.75 m  
Weight: 42'000 kg

## Output potential

250 t/h



# AUTOMATIC SHREDDING ADJUSTMENT

## ASA SYSTEM

The ASA sensor detects the level of material on the main conveyor of your CENTAURO.

Depending on the amount of material, the flow through the primary shredder is adjusted to the optimal amount.

Users can adjust the ASA sensor from PLC.

Maximum operational efficiency, automated.

## PLC CONTROLLED ASA SYSTEM

Each CENTAURO is equipped with a PLC that controls the ASA system intuitively and effectively.

The user is able to select the threshold levels and activate the system to stop only one or both shafts depending on the amount of material on the main conveyor.





RANGE

# UTM

## FEATURES

- Automatic material handling programmes;
- Ability to handle wet materials;
- Low fuel consumption;
- Designed for transport in compact size;
- High wear resistance;
- Ability to supply electricity to other equipment;
- Limited noise and dust emissions.

## OPTIONAL

- GPS;
- Hydraulic pushers;
- Electronic weighing system;
- Diesel filling pump;
- Automatic greasing system.





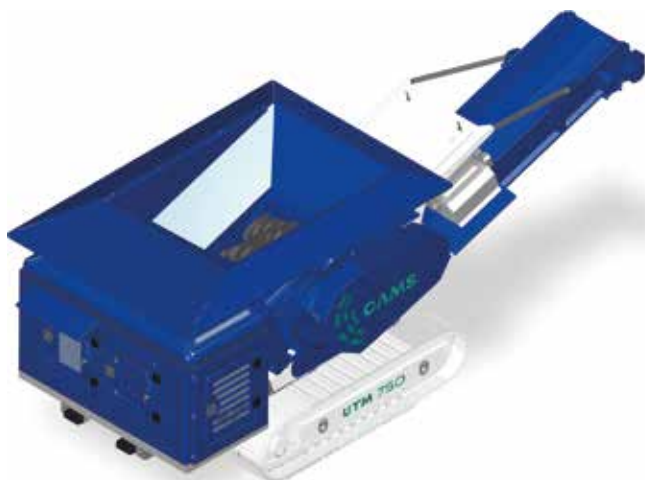


### Hybrid Power Supply

The **UTM** series can operate  
in fully electric mode, for **Zero CO<sub>2</sub> emissions**  
(without Diesel engine)



# UTM 750



## Hopper

Capacity: 1.50 m<sup>3</sup>  
Length: 2.30 m  
Width: 1.70 m

## Primary Conveyor

Width: 600 mm  
Length: 5000 mm

## Primary shredder

Range: FTR 750  
Feed opening: mm 750 x 900

## Hybrid Power Unit

Engine: FTP F36 Stage V 90 kW  
Alternator: Linz 80 kVA  
Tank capacity: 170 l

## Transport dimensions

Length: 7.00 m  
Height: 2.50 m  
Width: 2.50 m  
Weight: 11'500 kg

## Output potential

80 t/h

# UTM 1000



## Hopper

Capacity: 3.00 m<sup>3</sup>  
Length: 3.00 m  
Width: 2.00 m

## Primary Conveyor

Width: 800 mm  
Length: 7000 mm

## Primary shredder

Range: FTR 1000  
Feed opening: mm 1000 x 900

## Hybrid Power Unit

Engine: CAT C4.4 Stage V 125 kW  
Alternator: MeccAlte 165 kVA  
Tank capacity: 170 l

## Transport dimensions

Length: 6.70 m  
Height: 3.00 m  
Width: 2.55 m  
Weight: 15'500 kg

## Output potential

120 t/h



# UTM 1200



## Hopper

Capacity: 3.50 m<sup>3</sup>  
Length: 3.20 m  
Width: 2.00 m

## Primary Conveyor

Width: 800 mm  
Length: 7000 mm

## Primary shredder

Range: FTR 1200  
Feed opening: mm 1200 x 900

## Hybrid Power Unit

Engine: CAT C4.4 Stage V 125 kW  
Alternator: MeccAlte 165 kVA  
Tank capacity: 170 l

## Output potential

150 t/h

## Transport dimensions

Length: 6.80 m  
Height: 3.10 m  
Width: 2.55 m  
Weight: 17'500 kg

# UTM 1500



## Hopper

Capacity: 3.80 m<sup>3</sup>  
Length: 3.50 m  
Width: 2.00 m

## Primary Conveyor

Width: 800 mm  
Length: 8000 mm

## Primary shredder

Range: FTR 1500  
Feed opening: mm 1500 x 900

## Hybrid Power Unit

Engine: CAT C7.1 Stage V 200 kW  
Alternator: MeccAlte 350 kVA  
Tank capacity: 170 l

## Output potential

200 t/h

## Transport dimensions

Length: 10.55 m  
Height: 3.10 m  
Width: 2.50 m  
Weight: 23'000 kg



UTS 1500





RANGE

# UTS

## FEATURES

- Automatic material handling programmes;
- Ability to handle wet materials;
- Designed for transport in compact size;
- High wear resistance;
- Power supply;
- Limited noise and dust emissions.

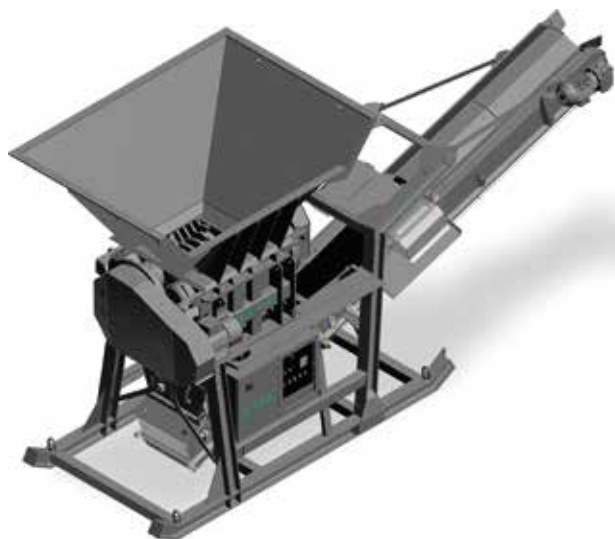
## OPTIONAL

- GPS;
- Hydraulic pushers;
- Electronic weighing system;
- Automatic greasing system.



Full - Electric

# UTS 750



## Hopper

Capacity: 1.50 m<sup>3</sup>  
Length: 2.30 m  
Width: 1.70 m

## Primary conveyor

Width: 600 mm  
Length: 5000 mm

## Shredder

Range: FTR 750  
Feed opening: mm 750 x 900

## Power supply

Power: 30 kW

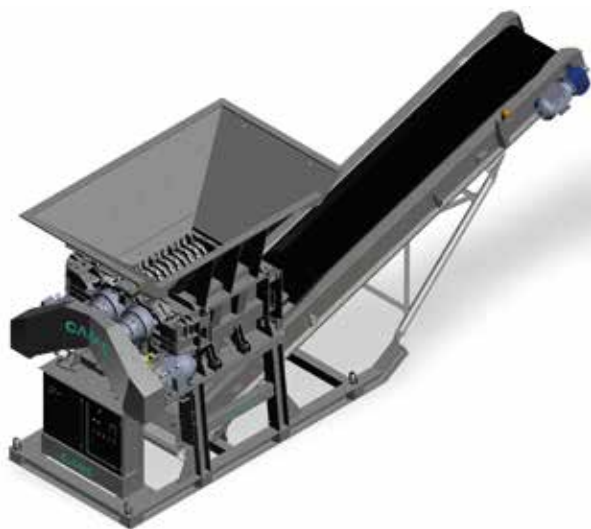
## Transport dimensions

Length: 7.00 m  
Height: 2.50 m  
Width: 2.50 m  
Weight: 11'000 kg

## Output potential

80 t/h

# UTS 1000



## Hopper

Capacity: 3.00 m<sup>3</sup>  
Length: 3.00 m  
Width: 2.00 m

## Primary conveyor

Width: 800 mm  
Length: 8000 mm

## Shredder

Range: FTR 1000  
Feed opening: mm 1000 x 900

## Power supply

Power: 45 kW

## Transport dimensions

Length: 8.70 m  
Height: 2.70m  
Width: 2.50 m  
Weight: 13'000 kg

## Output potential

120 t/h



# UTS 1200



## Hopper

Capacity: 3.50 m<sup>3</sup>  
Length: 3.20 m  
Width: 2.00 m

## Primary conveyor

Width: 800 mm  
Length: 8000 mm

## Shredder

Range: FTR 1200  
Feed opening: mm 1200 x 900

## Power supply

Power: 50 kW

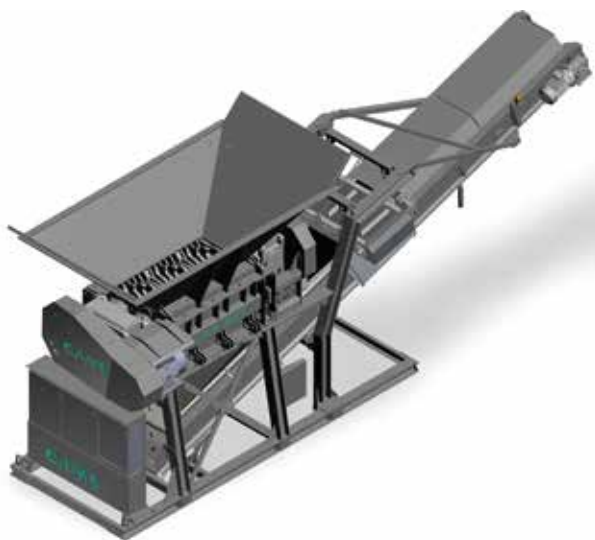
## Transport dimensions

Length: 8.90 m  
Height: 2.70 m  
Width: 2.50 m  
Weight: 15'000 kg

## Output potential

150 t/h

# UTS 1500



## Hopper

Capacity: 3.80 m<sup>3</sup>  
Length: 3.50 m  
Width: 2.00 m

## Primary conveyor

Width: 800 mm  
Length: 8000 mm

## Shredder

Range: FTR 1500  
Feed opening: mm 1500 x 900

## Power supply

Power: 70 kW

## Transport dimensions

Length: 9.30 m  
Height: 3.10 m  
Width: 2.50 m  
Weight: 16'000 kg

## Output potential

200 t/h



RANGE

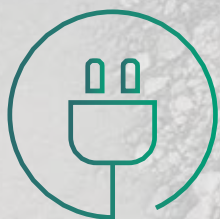
# UCS

## FEATURES

- Automatic material handling programmes;
- Ability to handle wet materials;
- Designed for transport in compact size;
- High wear resistance;
- Limited noise and dust emissions;
- Ability to recycle 100% of asphalt.

## OPTIONAL

- GPS;
- Electronic weighing system;
- Automatic greasing system;
- Magnetic separator.



Full - Electric





# UCS1200



## Secondary shredder

Range: CTR 1200

Feed opening: mm 1200 x 900

## Power supply

Power: 50 kW

## Conveyor

Width: 600 mm

Length: 8000 mm

## Transport dimensions

Length: 8.20 m

Height: 3.10 m

Width: 1.90 m

Weight: 5'500 kg

# CTR1200



## Secondary shredder

Range: CTR 1200

Feed opening: mm 1200 x 900

## Output potential

120 t/h

## Power supply

Power: 45 kW









RANGE

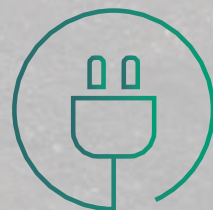
# UVS

## FEATURES

- Ability to handle wet materials;
- Designed for transport in compact size;
- High wear resistance;
- Limited noise and dust emissions;
- Ability to recycle 100% of asphalt.

## OPTIONAL

- Feeding Hopper;
- GPS;
- Electronic weighing system;
- Automatic greasing system.



Full - Electric

# UVS 25/2



## Screen

Type: CVV025  
Deck surface: mm 1000 x 2500  
Decks number: 2

## Oversize conveyor

Width: 450 mm  
Length: 5600 mm

## Midsized conveyor

Width: 450 mm  
Length: 5600 mm

## Finesize conveyor

Width: 900 mm  
Length: 5600 mm

## Working dimensions

Length: 7.30 m  
Height: 2.65 m  
Width: 10 m  
Weight: 4'500 kg

## Power supply

Power: 25 kW

# UVS 36/2



## Screen

Type: CVV036  
Deck surface: mm 1200 x 3000  
Decks number: 2

## Oversize conveyor

Width: 500 mm  
Length: 6500 mm

## Midsized conveyor

Width: 500 mm  
Length: 6500 mm

## Finesize conveyor

Width: 1000 mm  
Length: 6500 mm

## Working dimensions

Length: 9 m  
Height: 3.10 m  
Width: 12 m  
Weight: 6'200 kg

## Power supply

Power: 25 kW



# UVS 42



## Screen

Type: CVV042  
Deck surface: mm 1200 x 3500  
Decks number: 2

## Oversize conveyor

Width: 800 mm  
Length: 8000 mm

## Midsized conveyor

Width: 500 mm  
Length: 8000 mm

## Finesize conveyor

Width: 800 mm  
Length: 8000 mm

## Working dimensions

Length: 12 m  
Height: 4.20 m  
Width: 12 m  
Weight: 12'350 kg

## Power supply

Power: 32 kW

# UVS 56



## Screen

Type: CVV056  
Deck surface: mm 1300 x 4300  
Decks number: 2

## Oversize conveyor

Width: 800 mm  
Length: 8000 mm

## Midsized conveyor

Width: 800 mm  
Length: 8000 mm

## Finesize conveyor

Width: 800 mm  
Length: 8000 mm

## Working dimensions

Length: 14.7 m  
Height: 4.20 m  
Width: 14.5 m  
Weight: 12'450 kg

## Power supply

Power: 40 kW



RANGE

# FTR

## FEATURES

- Automatic material handling programmes;
- Ability to handle wet materials;
- Designed for transport in compact size;
- High wear resistance;
- Limited noise and dust emissions.

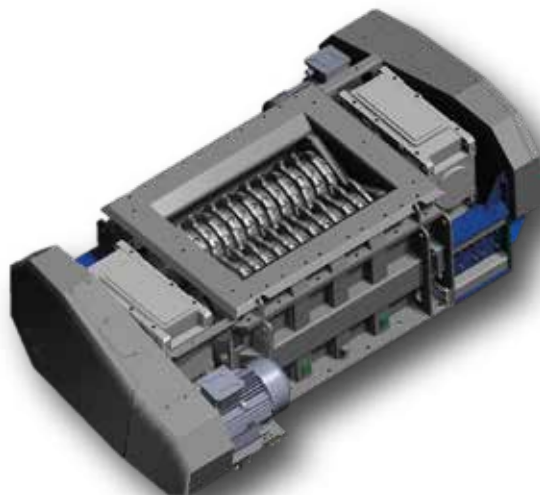
## OPTIONAL

- Hydraulic pushers;
- GPS;
- Automatic greasing system.



Full - Electric





## FTR 750

### Transport dimensions

Length: 2.50 m

Width: 2.50 m

Height: 1.10 m

### Output potential

80 t/h

## FTR 1000

### Transport dimensions

Length: 3.30 m

Width: 2.50 m

Height: 1.10 m

### Output potential

120 t/h

## FTR 1200

### Transport dimensions

Length: 3.60 m

Width: 2.50 m

Height: 1.10 m

### Output potential

150 t/h

## FTR 1500

### Transport dimensions

Length: 3.90 m

Width: 2.50 m

Height: 1.10 m

### Output potential

200 t/h



# DUST SUPPRESSION CANNON

**Range**

30 m

**Surface reached**

2850 m<sup>2</sup>

**Horizontal rotation**

0° - 350°

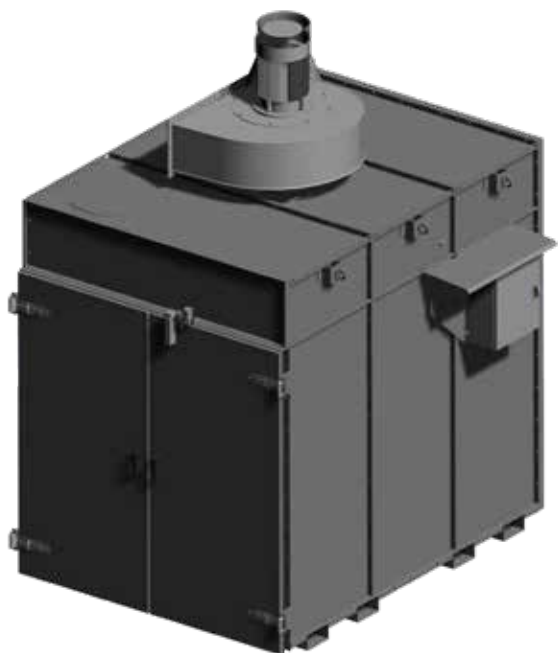
**Inclination**

0° - 70°

**Number of nozzles**

n. 18





### Internal trolley

For collecting lightweight materials with emptying wheels

### Airflow

8000 m<sup>3</sup>/h

### Static head

225 mmCA

### Electric power supply

Power: 7.5 kW

### Box dimensions

Length: 2.10 m

Height: 2.20 m

Width: 1.35 m

Weight: 150 kg

# AERAULIC SEPARATOR













# CAMS

IL FUTURO È VERDE



**CAMS SRL**

Via Giulio Golini, 301

40024 Castel San Pietro Terme, Bologna - Italy



+39 051 69 46 611



info@camsrsl.it



camsrecycling.com